

FULL NAME: \_\_\_\_\_

# A LEVEL ART & DESIGN

## SUMMER HL

Welcome to Ark John Keats A Level Art and Design.  
The Art department looks forward to your arrival and learning more about you as  
an artist.

**You will need to complete the 3 pieces of HL  
(home learning) in this pack over the  
summer prior to your arrival in Y12.**



Want to get a sketchbook to present all of this work in? *Amazon are still delivering!*



## 1) COMPLETE A STATEMENT OF INTENT ESSAY



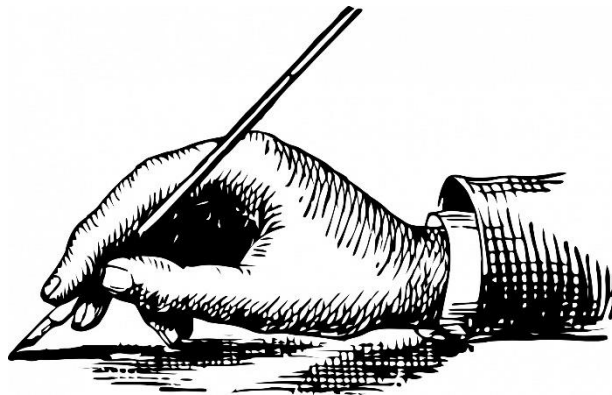
In this statement of intent essay, you will write an extended piece about who you are as an artist. You are expected to write a minimum of 1000 words. **This is excellent practice for the written element of our A Level personal investigation project.**

This essay can be typed up using a computer, written in a blue or black pen onto lined paper, or presented more creatively. Your essay must be ready to be submitted.

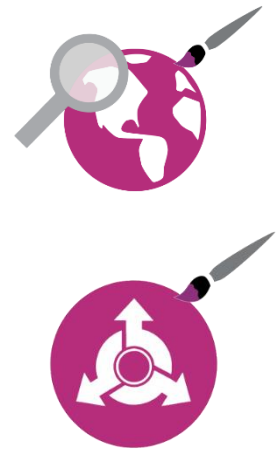
The following questions below are designed to help you plan your essay:

1. What themes/concepts interest you (e.g. environmental issues, politics)? What ideas did you explore and investigate in your GCSE and why?
2. Do you plan to investigate this theme/concept further in A Level? Why/ Why not? How do you think you could explore this theme/concept further?
3. Which artists have personally inspired you and how have they inspired your work? What else inspires you (e.g. films/comics) and why?
4. What area of study (e.g. Fine art, Graphics, 3D, Textiles, or Photography) are you most interested in? How could you develop this area of study further at A Level?
5. What type of media (painting, oil pastel etc.) are you most confident in and why? How could you develop your mastery over this media in A Level?

*Your writing should include research and images (of your work or other artists) to support your essay. Remember to use formal elements in your writing as well to support your points (e.g. composition, tone, texture etc.). You could also think creatively about the presentation of your essay.*



## 2) VISIT AND CONDUCT RESEARCH ON AN EXHIBITION, GALLERY OR MUSEUM



In this task, you will need to visit an exhibition, gallery or museum that links to your interests (e.g. natural history museum for environmental issues, a political exhibition for feminism) and gather research. You should research online for what exhibitions are available to attend in summer.

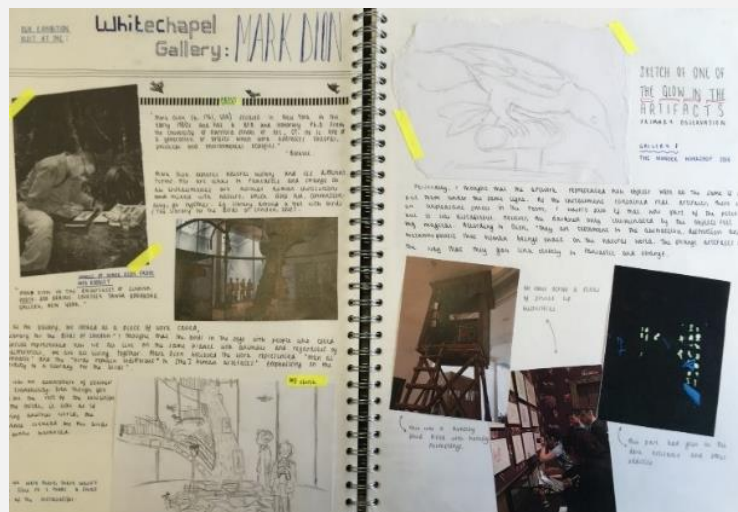
Because of lockdown, you may not be able to attend an actual gallery before September. Therefore, you should go to a 'virtual gallery' online, many of which have become more available during this strange time.

This research can be presented through a mini booklet, a double page in your own sketchbook or notebook. This research can be typed up or written and presented neatly.

Your research must include the following:

- **The title of the exhibition**
- **Information about the exhibition**  
*(Who is the artist/artists? Where is the exhibition? What is the aim of this exhibition?)*
- **Images of the exhibition work (both your own if possible and from online sources)**
- **A pamphlet/information sheet from the exhibition if possible (you could highlight and make notes on this)**
- **Analysis of at least 4-5 artworks in this exhibition**  
*(Why have you chosen these artworks? What do you think is successful about these artworks? How could you be inspired by these artworks?)*
- **Your overall opinion about this exhibition**  
*(How does this exhibition link to your statement of intent and you as an artist? What could you learn from this exhibition?)*
- **Sketches/drawings/responses from the exhibition**  
*(this could be in any media e.g. pencil, pen, ink)*

Example of exhibition research



To find virtual tours of galleries online, just type into google 'virtual gallery tours', and search for one that looks interesting to you, or use the list below.



Recommended virtual gallery tours:

[https://www.saatchigallery.com/video\\_tours.php](https://www.saatchigallery.com/video_tours.php)







<https://artsandculture.google.com/partner/solomon-r-guggenheim-museum>



<https://www.timeout.com/los-angeles/news/you-can-soak-up-yayoi-kusamas-infinity-mirrorred-room-with-the-broads-new-streaming-series-040120>



<https://brokenships.com/explore>

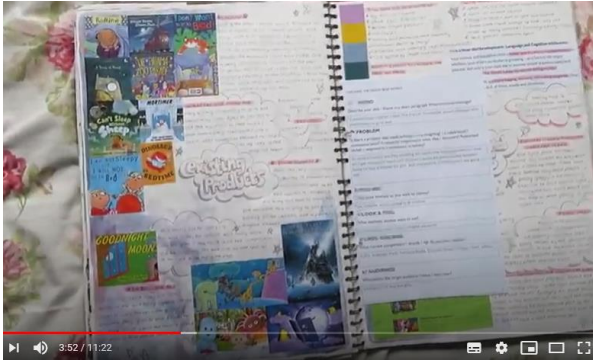
 <p><b>COLLECTION</b> <b>Number 2</b> Summer 2007 Manila, Philippines He had another woman. He couldn't make me his number 1; I couldn't stand being his numb...</p>	 <p><b>COLLECTION</b> <b>Sailor's cap</b> 2 years Brühl, Germany For 48 years I have kept this memory of my Spanish friend. As a student of the engineer...</p>	 <p><b>COLLECTION</b> <b>Our puppets</b> More than 10 years Santofia (Cantabria), Spain These puppets were handmade by my ex-girlfriend, who gave them to me for my birthday. T...</p>	 <p><b>COLLECTION</b> <b>A stiletto shoe</b> 1960, six weeks, and 1990, a few hours Amsterdam, the Netherlands</p>
---	--	---	--



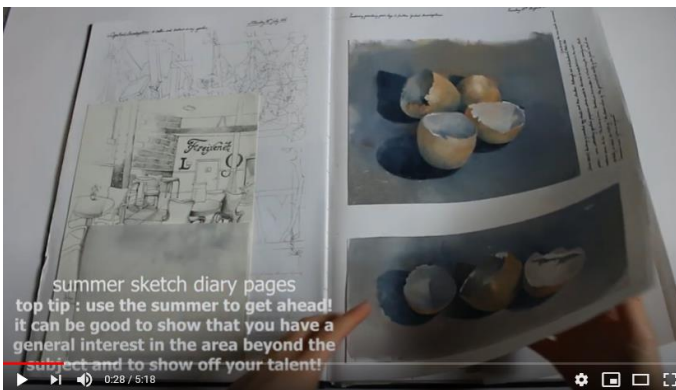
### 3) WATCH THE VIDEOS OF EXAMPLE A LEVEL WORK, MAKE NOTES AND ANSWER THE QUESTIONS

In this task, you will need to visit the 3 links below (pupils showing/talking through their A Level personal investigation projects), make notes on each of these videos, and then answer the questions in the box below.

1. <https://www.youtube.com/watch?v=Su2uUFB7rjs>



2. [https://www.youtube.com/watch?v=zLSc\\_00A16o](https://www.youtube.com/watch?v=zLSc_00A16o)



3. <https://www.youtube.com/watch?v=H3DBDd0B0Ow&t=325s>



#### Questions to answer (paper):

- What did all 3 projects have in common?
- What was most successful about these A Level projects?
- Did anything surprise you?
- Do you think there are any differences from A Level projects to GCSE projects?
- What have you learnt from watching these videos?

We look forward to reviewing and discussing this work in September. If you have any questions at all, please email Ms Hatcher, [e.hatcher@arkjohnkeatsacademy.org](mailto:e.hatcher@arkjohnkeatsacademy.org)

We have created a google classroom page for you to share ideas –

Summer HL - A Level Art - Code - pzdmwso