



ARK JOHN KEATS ACADEMY

WEEKLY EMAIL FOR PARENTS



CHARACTER TRAIT OF THE WEEK



Adaptability

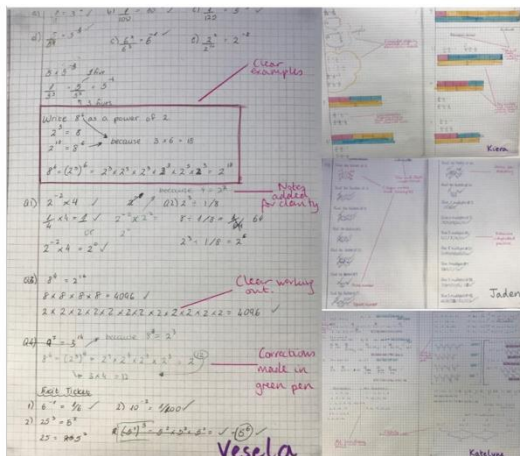
This means that I am...
...reasoning and flexible.

Which means that I can...
...transfer skills, problem solve, make connections, recycle, imitate, remember, use all the resources available and work with different people and in groups.

WELCOME BACK!

We wished our pupils a warm welcome back after the half-term break! This term has some exciting events: our first Pillar Day; the Shakespeare Schools Festival; our first round of exams in Assessment Point 1; the year 7 Oliver production. To prepare for AP1, pupils received their exam timetables in Prep. These are to help them organise their revision well in advance of assessment week. We look forward to seeing their effort in class as they continue to make lots of progress over the next few weeks. Have a fantastic half term!

WONDERFUL WORK - MATHS



Click on the picture to read the article.

KS4 ENRICHMENT

ENRICHMENT



Click on the picture to read the article.

UNIFORM

It is essential that we continue to maintain and improve the standards of our uniform. It should be worn with pride by all pupils at school as well as to and from the academy. There are two areas that we would like to clarify. Trousers worn by pupils should be smart, navy blue trousers as described in our uniform policy. They should not be tight. Any pupils wearing tight trousers will be given a poor presentation check. External clothing such as coats and jackets must be plain and dark in colour. They must be worn over the blazer and never instead. We ask that you support us by ensuring your child has the correct uniform. If you have any queries relating to uniform, please contact your child's Head of Year.

Shout Outs

Year 7 – Selin, Elif, Tahiya, Faris, Sabrina, Nabila and Ilayda

Year 8 - Sanjida, Benjamin, Mariam, Michael, Sajinda, Karol, Krisjanis, Istar, Mariam and Maddie

Year 9 - Casey, Sean, Tionne, Alex, Miah, Arda, JoJo, Max, Lyndsey, Aaliyah

Dates for the diary

Pillar Day (Curriculum Day) – Thursday 9th November 2017

Assessment Week – Tuesday 5th December to Thursday 7th December 2017

Inset Day – Friday 8th December (*School closed to all pupils*)